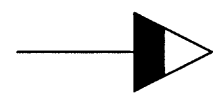


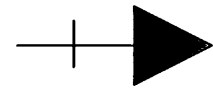
# TRAFFIC SIGNAL SYMBOLS



OPTICALLY LIMITING TRAFFIC SIGNAL HEAD



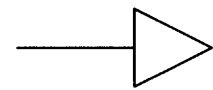
TRAFFIC SIGNAL HEAD



TRAFFIC SIGNAL HEAD WITH BACK PLATE



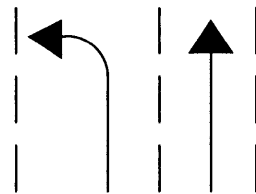
PEDESTRIAN SIGNAL HEAD



FLASHING PED. SIGNAL



STOP BAR



LANE USE



STEEL POLE



STREET LIGHT POLE



WOOD POLE



MAST ARM POLE



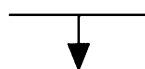
SIGNAL PEDESTAL



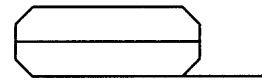
CONTROLLER



PULL BOX



SPAN WIRE WITH SIGNAL HEAD



INDUCTION LOOP DETECTOR



PUSH BUTTON DETECTOR



OPTICOM DETECTOR



MAGNATOMETER DETECTOR



POWER SUPPLY ASSEMBLY



CONDUIT

3"

SIZE OF CONDUIT

3-2c-#14

NUMBER & SIZE OF CABLE



SIGNAL FACE NUMBER



POST NUMBER



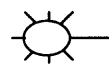
DETECTOR NUMBER



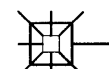
PULL BOX NUMBER

PB2

PUSH BUTTON NUMBER



COBRA HEAD LUMINAIRE



SHOEBOX LUMINAIRE



VEHICULAR DETECTION CAMERA ON LUMINAIRE ARM



SUGGESTED VEHICLE DETECTION ZONE

- R RED LENS
- Y YELLOW LENS
- G GREEN LENS
- R ← RED LEFT ARROW LENS
- Y ← YELLOW LEFT ARROW LENS
- G ← GREEN LEFT ARROW LENS
- R → RED RIGHT ARROW LENS
- Y → YELLOW RIGHT ARROW LENS
- G → GREEN RIGHT ARROW LENS
- R ↑ RED STRAIGHT ARROW LENS
- Y ↑ YELLOW STRAIGHT ARROW LENS
- G ↑ GREEN STRAIGHT ARROW LENS
- W WALK
- DW DON'T WALK
- FDW FLASH DON'T WALK

KANSAS CITY, MISSOURI PUBLIC WORKS DEPARTMENT TRANSPORTATION PLANNING AND DESIGN SECTION		
SYMBOL LEGEND		
PROJ. NO. 100-089-7731-YXX-XXXX		
DATE XX-XX-XX	SCALE N.T.S.	
DRWN BY J. WISNER	DSGN BY	CHKD BY
Sheet ____ of ____	TCD-0-2	