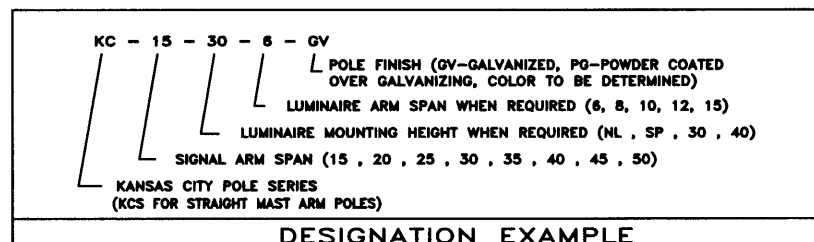
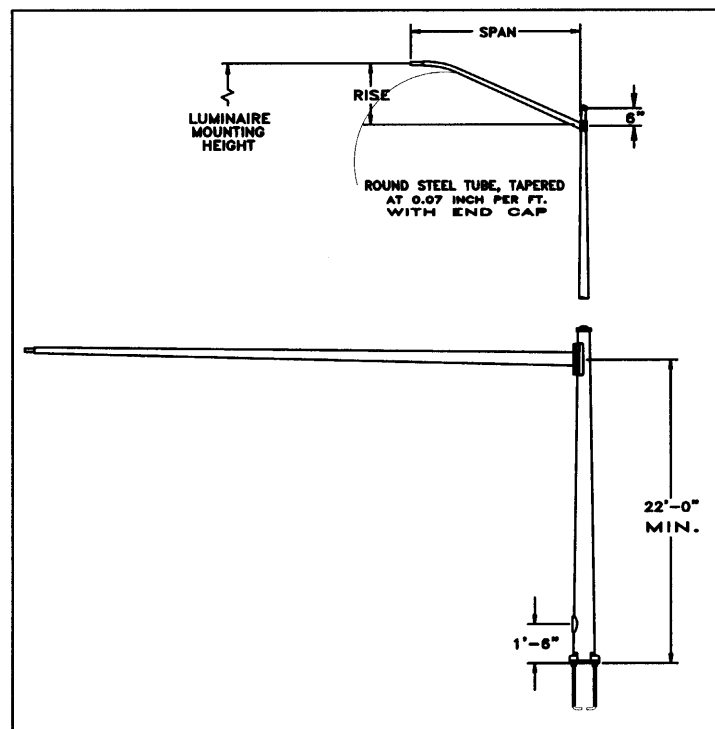
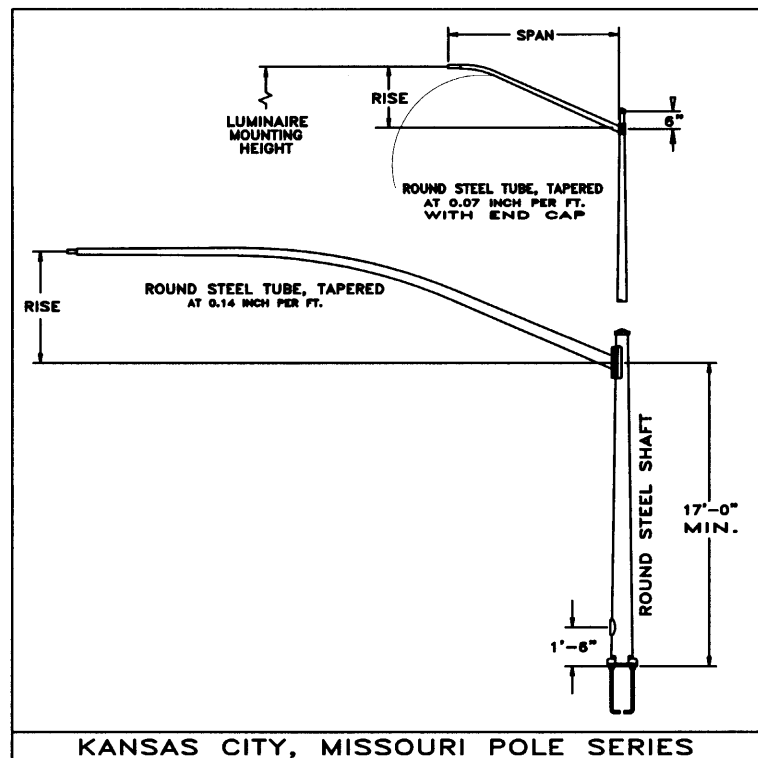
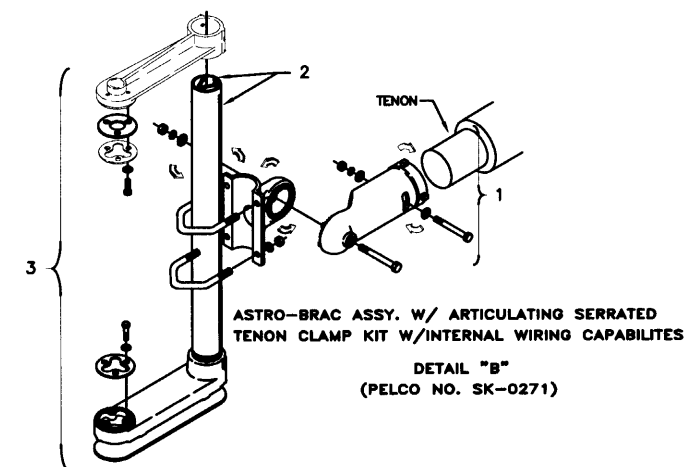


GENERAL NOTES

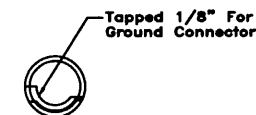
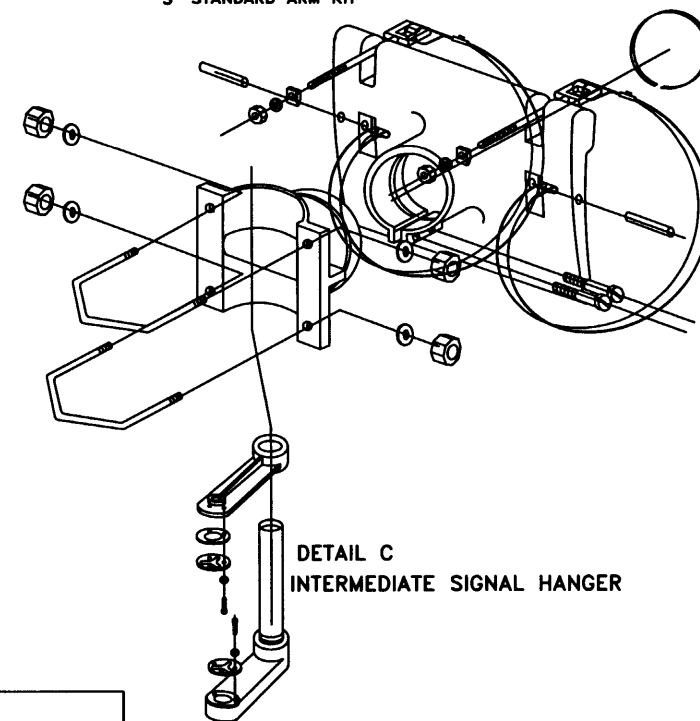
- 1) ALL POLES, ARMS AND MISCELLANEOUS EQUIPMENT SHALL CONFORM WITH THESE DETAILS AND THE LATEST EDITION OF THE RELEVANT KCMO STANDARD SPECIFICATIONS.
- 2) ALL STRUCTURES TO MEET THE DESIGN CRITERIA OF THE 1994 OR LATEST AASHTO STANDARD SPECIFICATIONS FOR STRUCTURAL SUPPORTS FOR HIGHWAY SIGNS, LUMINAIRES AND TRAFFIC SIGNALS FOR 80 M.P.H. WIND ZONE.
- 3) ALL SHOP DRAWINGS FOR EQUIPMENT TO BE USED SHALL BE APPROVED BY THE PROJECT MANAGER OR HIS/HER AUTHORIZED REPRESENTATIVE PRIOR TO ORDERING EQUIPMENT.
- 4) ALL CIRCUIT CABLES IN PULL BOXES, CONTROLLERS AND POLES SHALL BE IDENTIFIED WITH COLOR TAPES PER STANDARD SPECIFICATION (FOR CIRCUIT LABELING, SEE SPECIFICATION).
- 5) ALL OPENINGS IN POLES, POSTS, BRACKETS, ETC. TO BE CAPPED WATER TIGHT.



TYPE II BRACKET



- 1 ASTRO-BRAC ARTICULATING SERRATED TENON CLAMP KIT W/ INTERNAL WIRING CAPABILITES
- 2 GUSSET TUBE W/ VINYL INSERT
- 3 STANDARD ARM KIT



5" O.D., Wall Thickness .125" Bronze Integral Color Aluminum Association Class 1 Anodized

Peripherally Reinforced Access Door

Cast Aluminum Anchor Base A 336-T6 Alloy

PEDESTAL STREETSCAPE

PEDESTAL

Breakaway Base

KANSAS CITY, MISSOURI
PUBLIC WORKS DEPARTMENT
TRANSPORTATION PLANNING AND DESIGN SECTION

PEDESTAL AND MAST ARM DETAIL

PROJ. NO. 100-089-7731-YXX-XXXX

DATE 09-04 SCALE N.T.S.

DRWN BY D. YEMER DSGN BY CHKD BY

Sheet ___ of ___ **TCD-0-4**