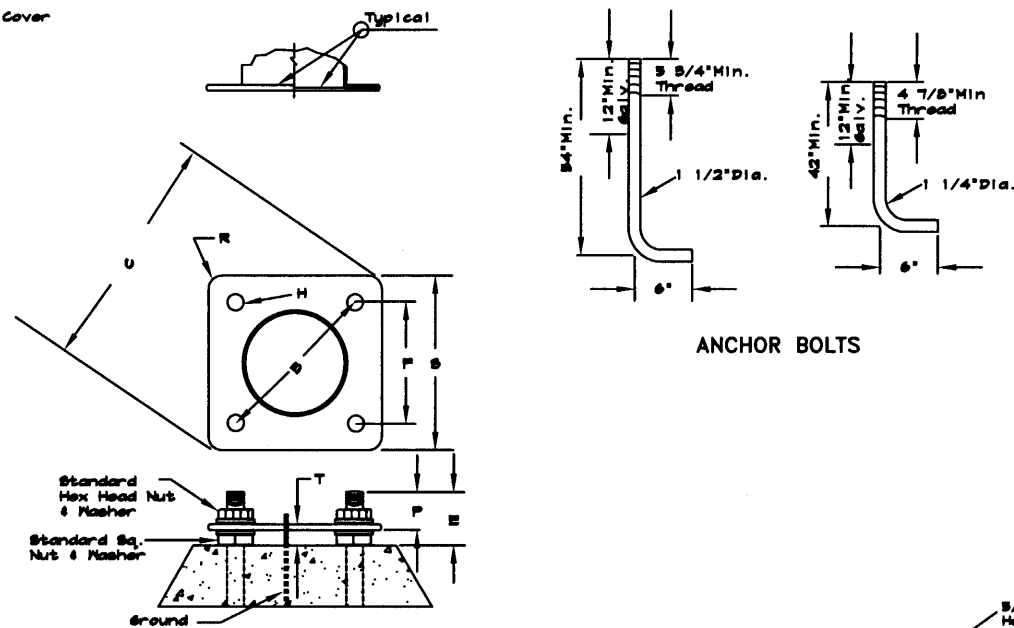
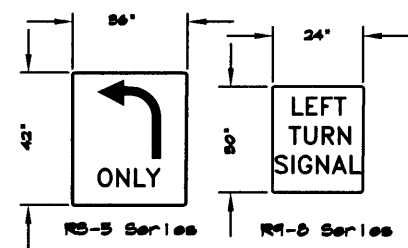


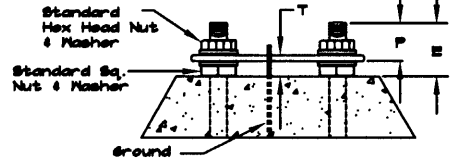
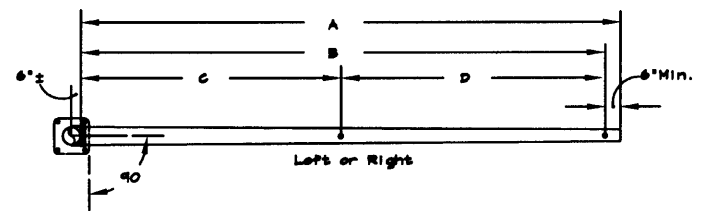
METAL BASE COVERS



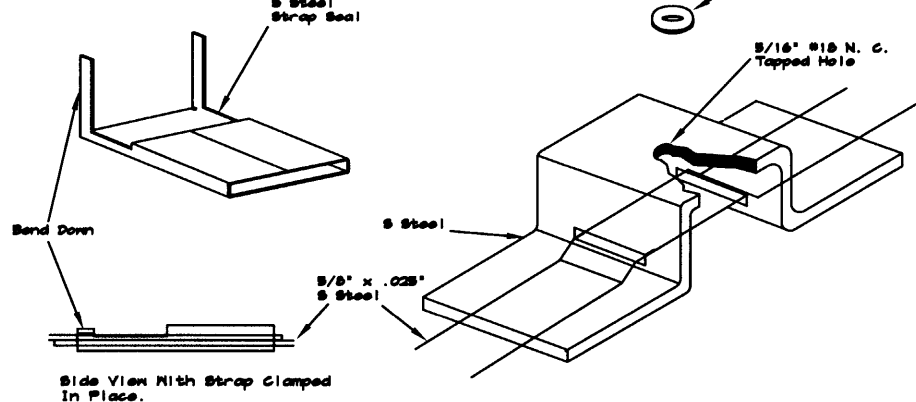
ANCHOR BOLTS



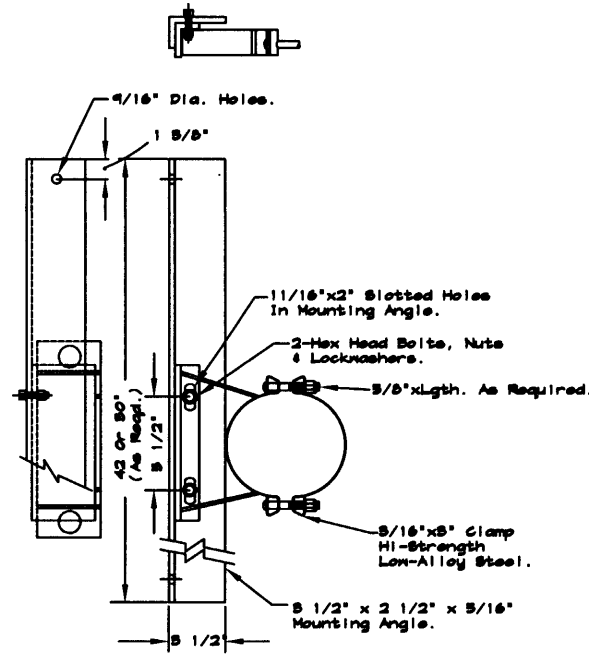
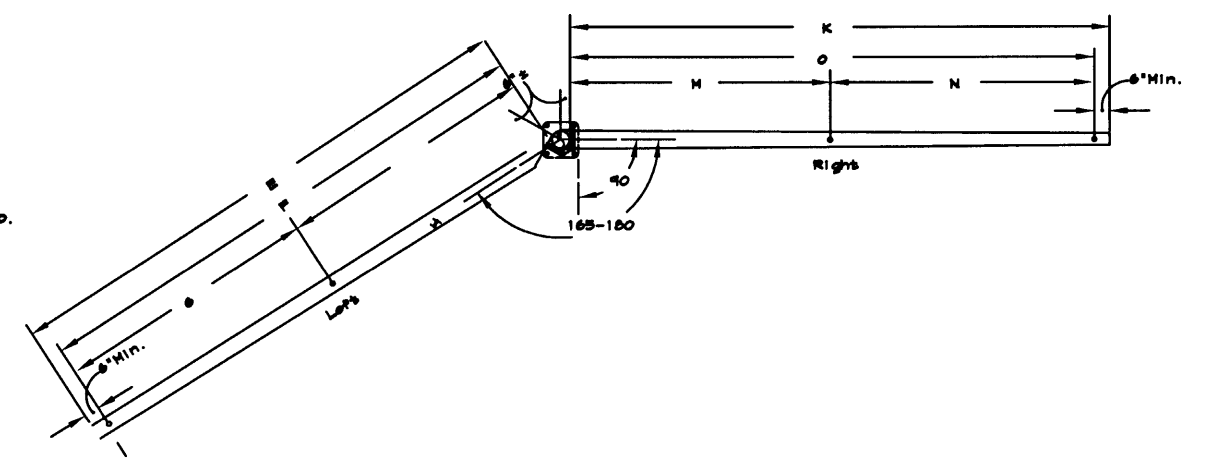
TURN SIGNS
(Furnished By Comm.)



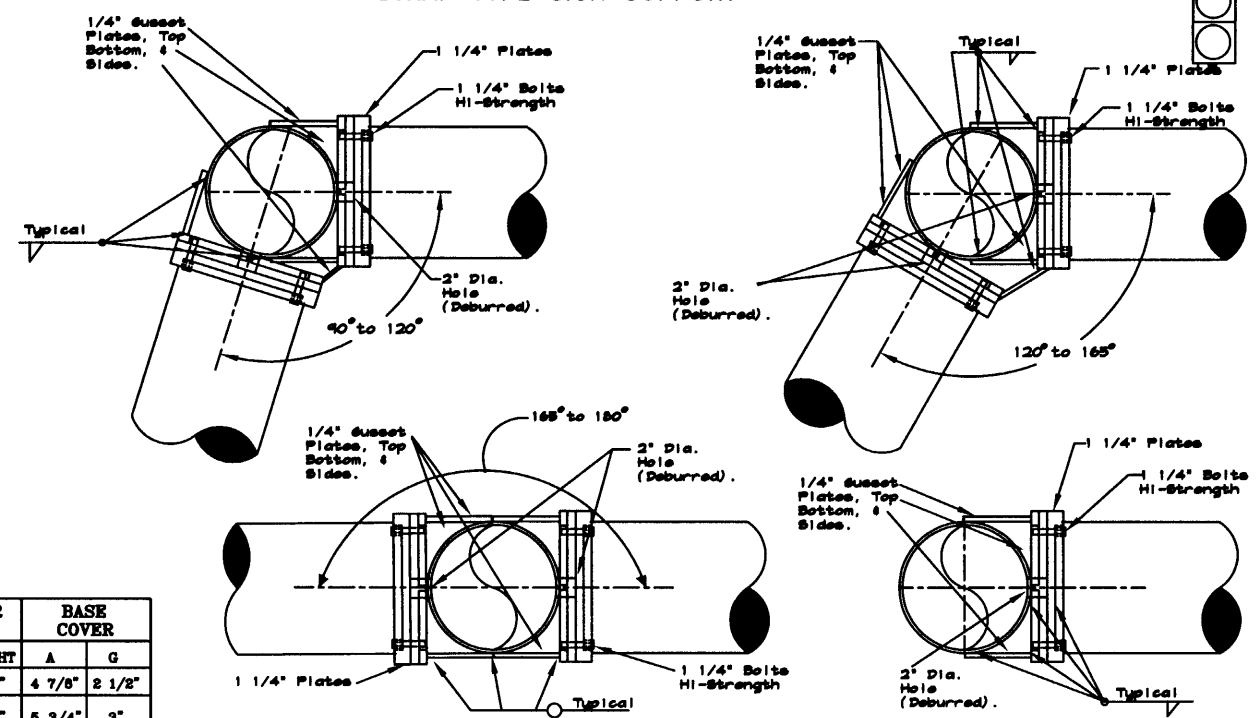
STEEL PLATE ANCHOR BASE



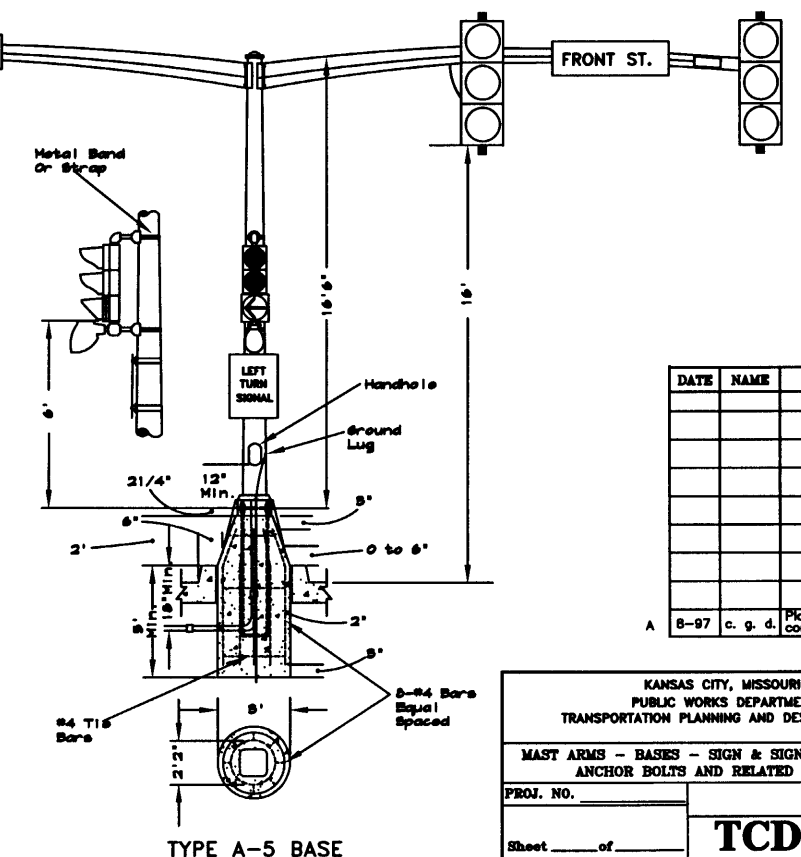
POST MOUNT
STRAP TYPE SIGN SUPPORT



SIGN BRACKET ASSEMBLY



ARM ATTACHMENTS



TYPE A-5 BASE

ARM LENGTH	ARM SIZE	POST SIZE FOR ONE OR TWO ARMS
6 - 10'	4" Standard Pipe	7 Ga. 9" x 8.89" x 18'-6"
11 - 12'	6" Standard Pipe	7 Ga. 9" x 8.89" x 18'-6"
13 - 20'	7 Ga. 7.5" x 0.14" Taper Per Foot	7 Ga. 11" x 8.89" x 18'-6"
21 - 23'	7 Ga. 8.3" x 0.14" Taper Per Foot	7 Ga. 12" x 9.89" x 18'-6"
24 - 25'	7 Ga. 9.0" x 0.14" Taper Per Foot	7 Ga. 12" x 9.89" x 18'-6"

POST GA.	D	POST BASE PLATE										ANCHOR BOLTS		BASE COVER		
		B	C	H	F	P	R	S	T	E	DIA	LGHT	A	G		
7	9"	12 1/2"	15 3/4"	1 1/2"	8 7/8"	3"	2 3/4"	12 3/4"	1 1/4"	4 7/8"	1 1/4"	48"	4 7/8"	2 1/2"		
7	11"	15"	19 1/8"	1 3/4"	10 5/8"	3 1/2"	3 1/2"	15 5/8"	1 1/2"	5 3/4"	1 1/2"	60"	5 3/4"	3"		
7	12"	16"	21"	1 3/4"	11 5/16"	3 1/2"	3 3/4"	17"	1 1/2"	5 3/4"	1 1/2"	60"	5 3/4"	3"		

DATE	NAME	REVISION

KANSAS CITY, MISSOURI
PUBLIC WORKS DEPARTMENT
TRANSPORTATION PLANNING AND DESIGN SECTION

MAST ARMS - BASES - SIGN & SIGN ASSEMBLIES - ANCHOR BOLTS AND RELATED NOTES

PROJ. NO. _____

Sheet _____ of _____

TCD-0-5A