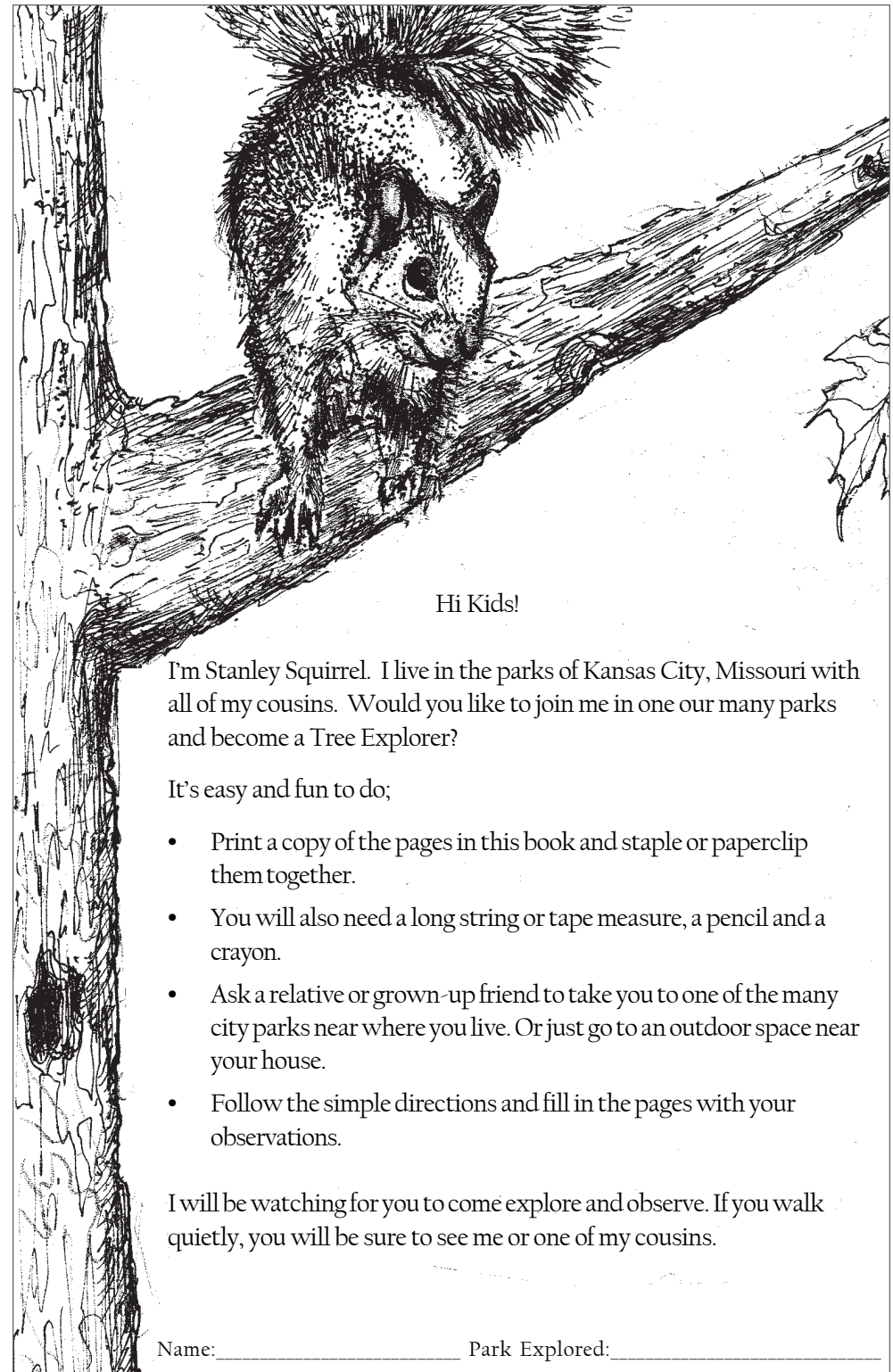


Jacob Loose Memorial Park  
Stanley R. McLane Arboretum  
Kansas City, Missouri

# TREE EXPLORATION COURSE

Copyright  
Garden Center Association of Greater Kansas City  
in cooperation with the  
Board of Parks and Recreation Commissioners



Hi Kids!

I'm Stanley Squirrel. I live in the parks of Kansas City, Missouri with all of my cousins. Would you like to join me in one our many parks and become a Tree Explorer?

It's easy and fun to do;

- Print a copy of the pages in this book and staple or paperclip them together.
- You will also need a long string or tape measure, a pencil and a crayon.
- Ask a relative or grown-up friend to take you to one of the many city parks near where you live. Or just go to an outdoor space near your house.
- Follow the simple directions and fill in the pages with your observations.

I will be watching for you to come explore and observe. If you walk quietly, you will be sure to see me or one of my cousins.

Name: \_\_\_\_\_ Park Explored: \_\_\_\_\_

## FINDING A FAVORITE TREE TREE SCULPTURE

- Find a tree that you like best.
- Draw a picture of the tree on this page.
- Be sure to draw in the bark and the leaves.

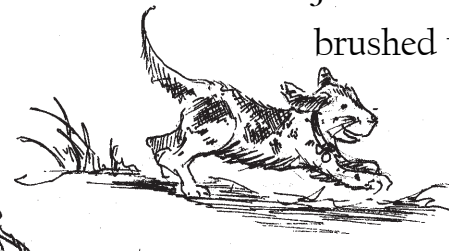
Why do you think trees have bark?

What does the bark of this tree feel like?

What part of your body is like bark is to a tree?

Joke: What did the dog say when he  
brushed up against a tree?

Bark! Bark!\*

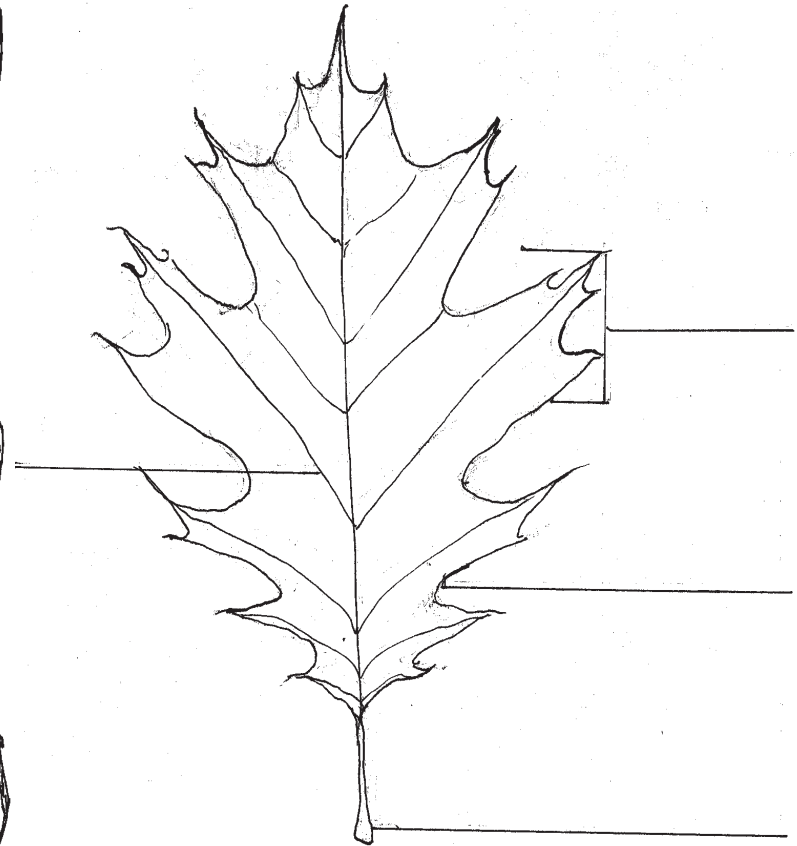


## OBSERVE SOME MORE TREES

- Look at 4 other trees.
- Do they all have the same leaves? Yes No  
Draw a picture here of the leaves you observed.
- Does the bark look the same? Yes No  
Draw a picture here of the bark you observed.
- Do you see any animals or signs of animals in trees?
- What do you hear when you listen quietly?

## LEAFING OUT

See if you can fill in the parts of the leaf in the blanks.



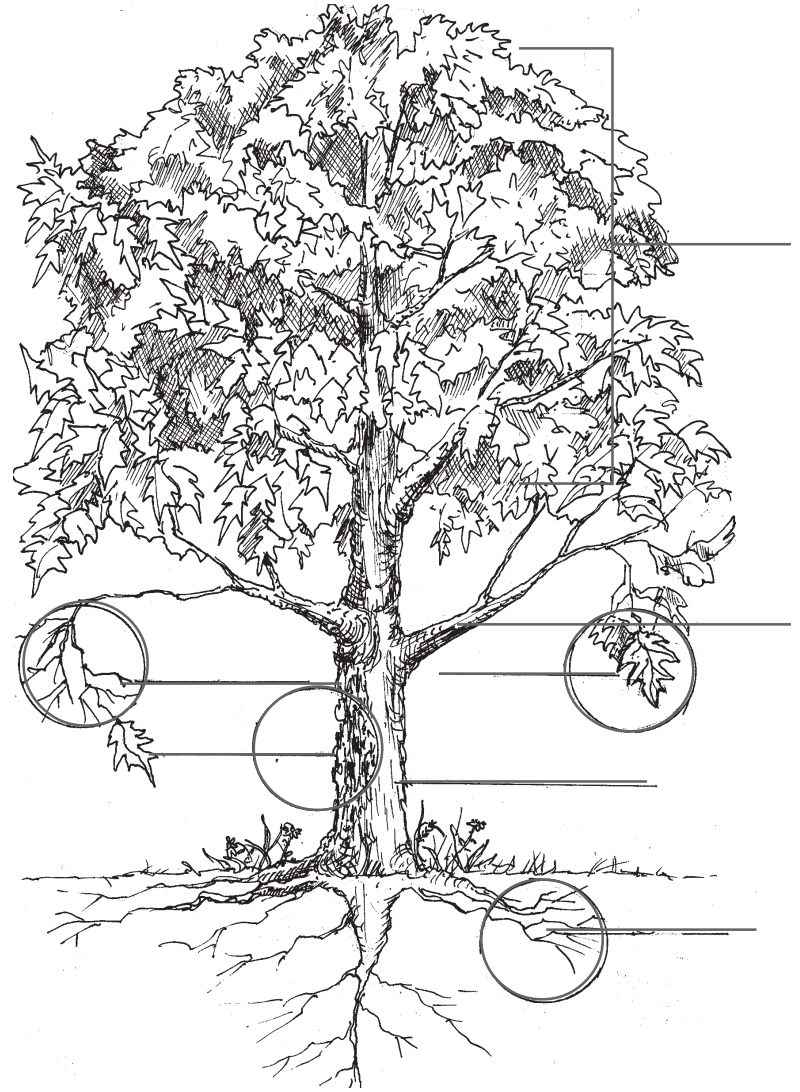
Fill in the parts of the leaf in the blanks.

- A. Margin
- B. Lobe
- C. Petiole
- D. Vein

# LEAF RUBBING

Find a leaf on the ground and place it underneath this page. Rub your crayon lightly on the top of the paper until you can see the leaf edges, veins and petiole appearing through.

Write in the parts of the tree in the blanks.



Here is a list of words to use:

- |    |        |    |       |
|----|--------|----|-------|
| 1. | Canopy | 5. | Bark  |
| 2. | Leaves | 6. | Trunk |
| 3. | Branch | 7. | Roots |
| 4. | Twig   |    |       |

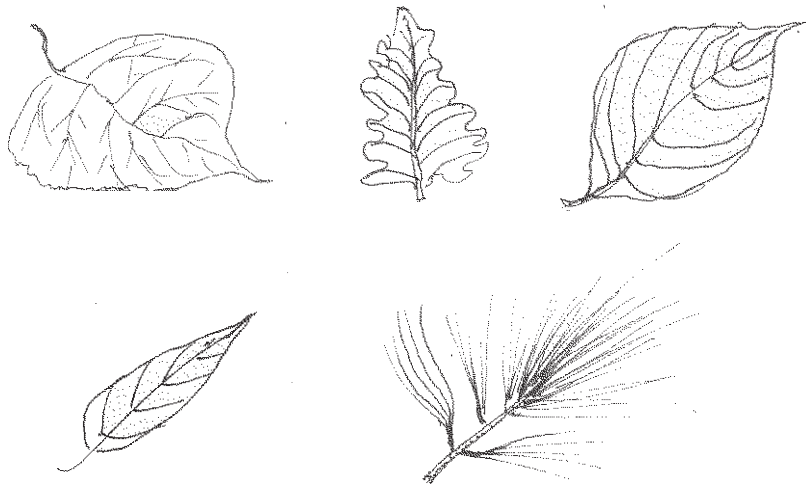
## TALKING ABOUT TRUNKS

Measure around the tree trunk at about 4 feet above the ground with a tape measure or a long string. How big around is this tree?

\_\_\_\_\_ inches

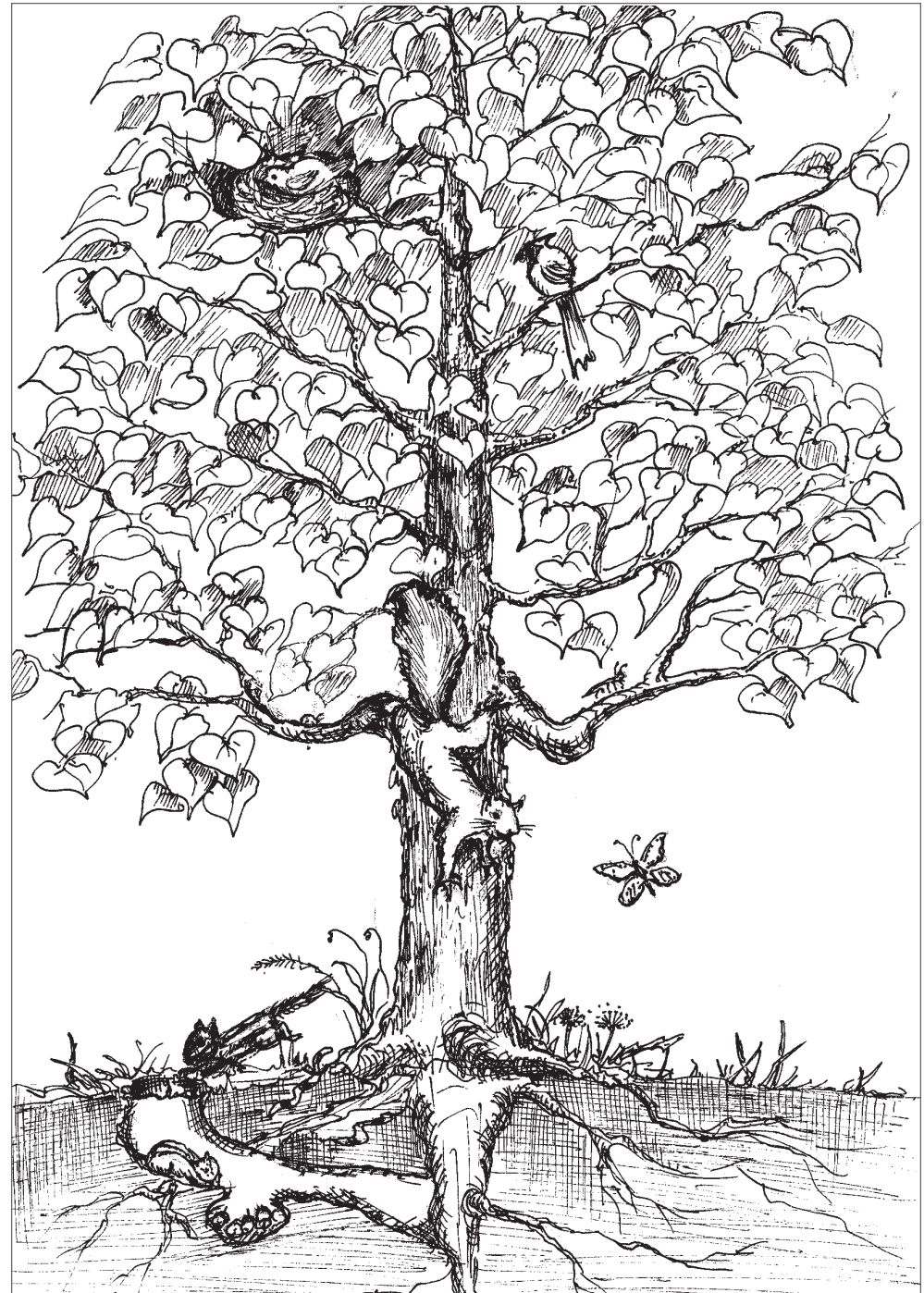
What is another way you could measure the circumference of a tree?

Study the shapes of the leaves below. See if you can find trees with leaves shaped like these below. Circle the ones that you find.



## HOME, TREE, HOME

This tree would look nice colored.



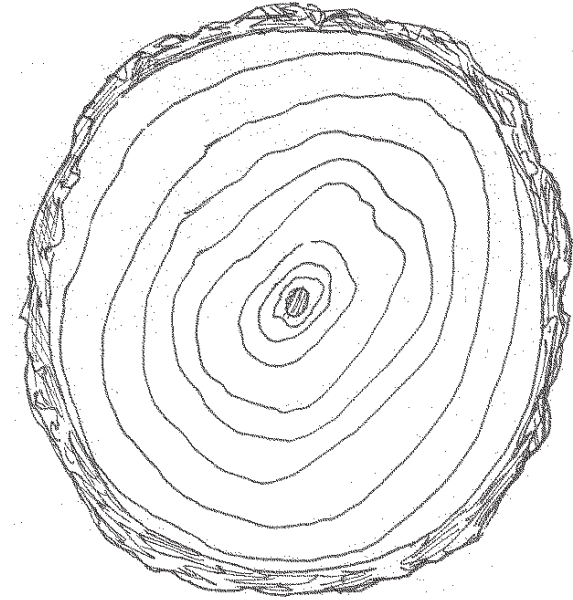
From what you observed in the picture, how do animals use trees to survive?

How do humans benefit from trees?

Can you think of something you could do to help protect a tree?

## TREE COOKIES

When you cut a tree trunk or branch into a narrow slice, you have a "Tree Cookie."



How many rings does this tree cookie have?

This cookie was cut from a tree that was how old?

If each ring represents one year of the tree's life, why do you think some of the spaces between the rings are bigger than others?

COLOR ME

