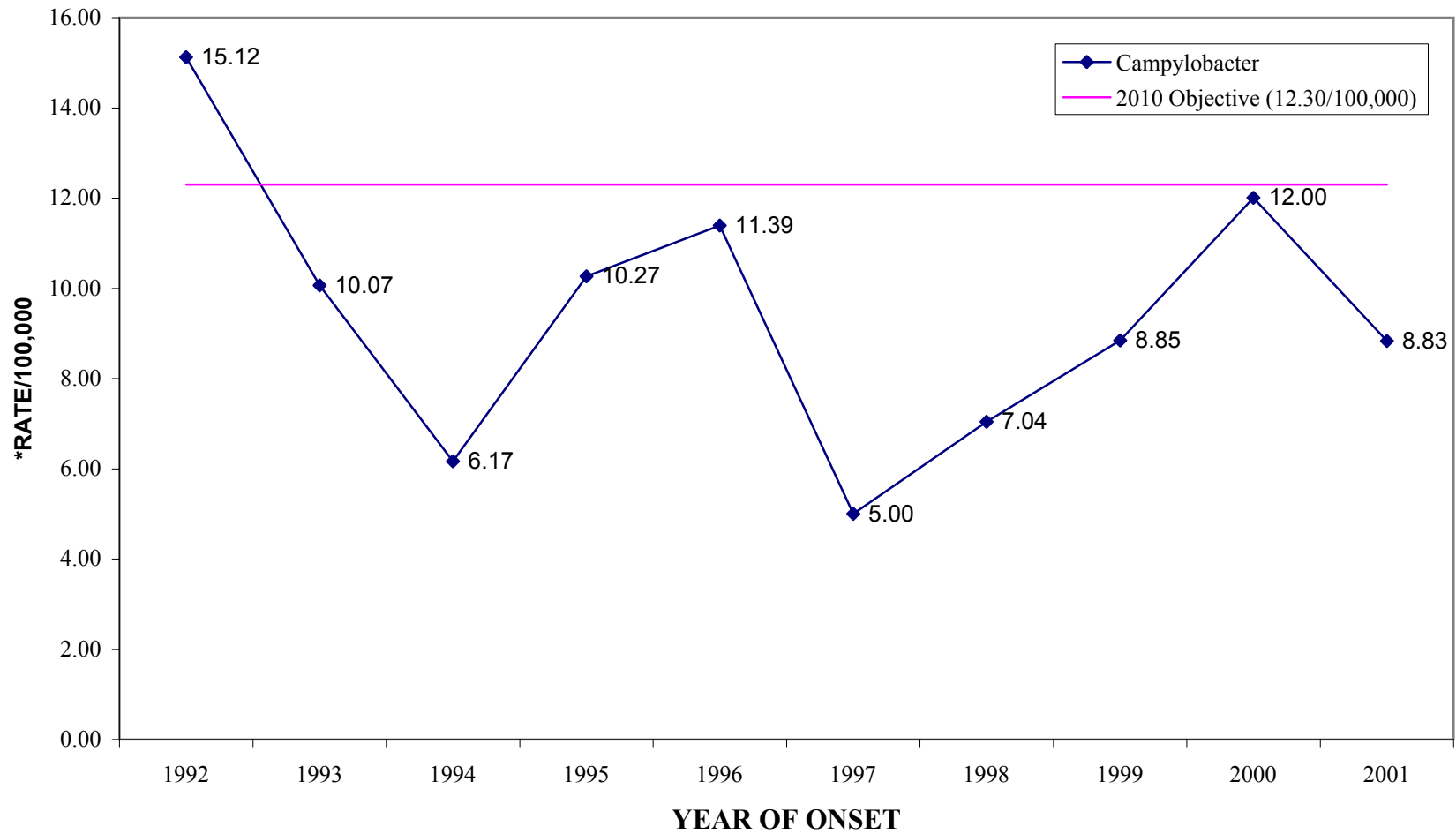
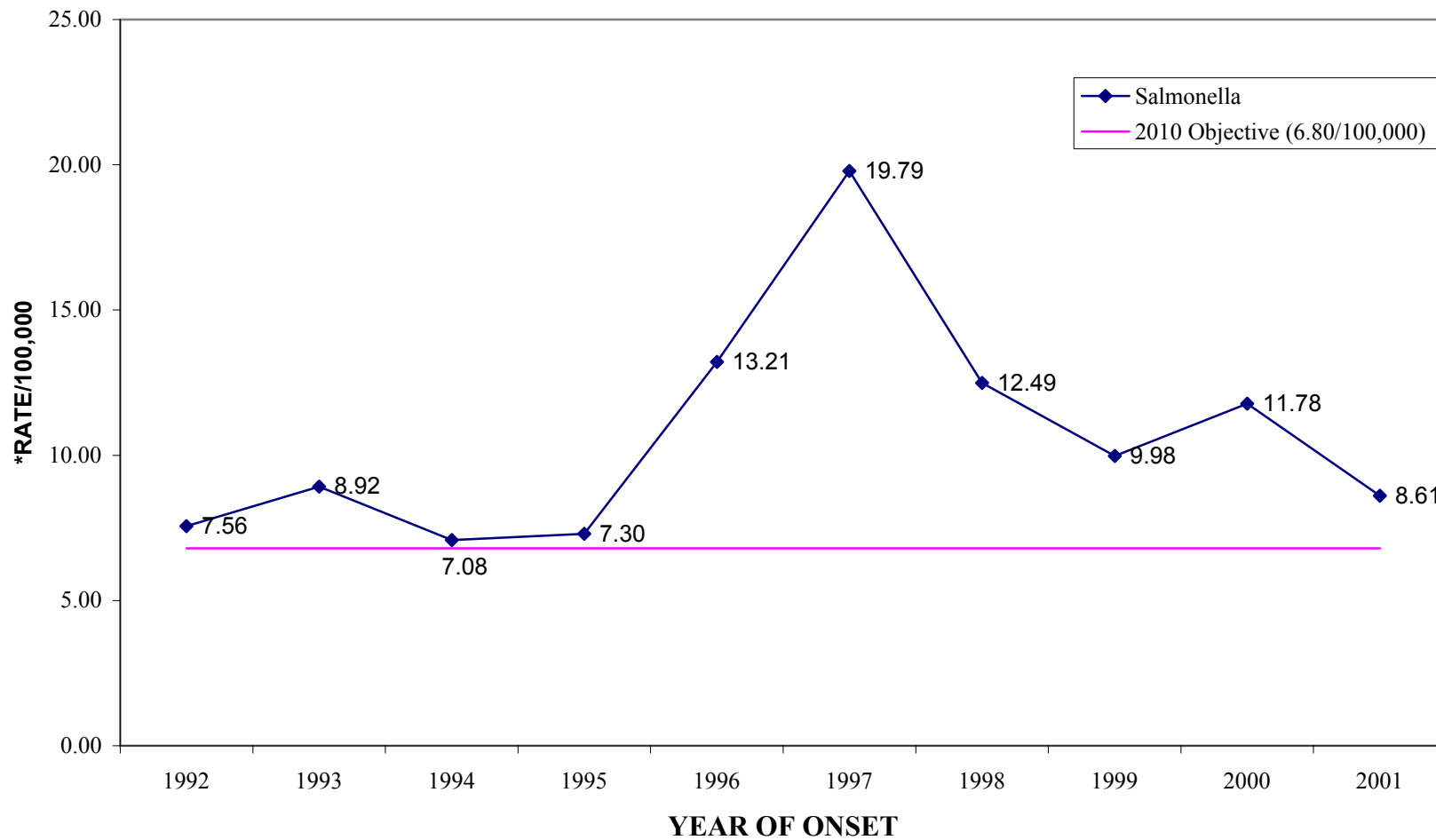


# CAMPYLOBACTER RATES OF INFECTION KANSAS CITY RESIDENTS 1992-2001



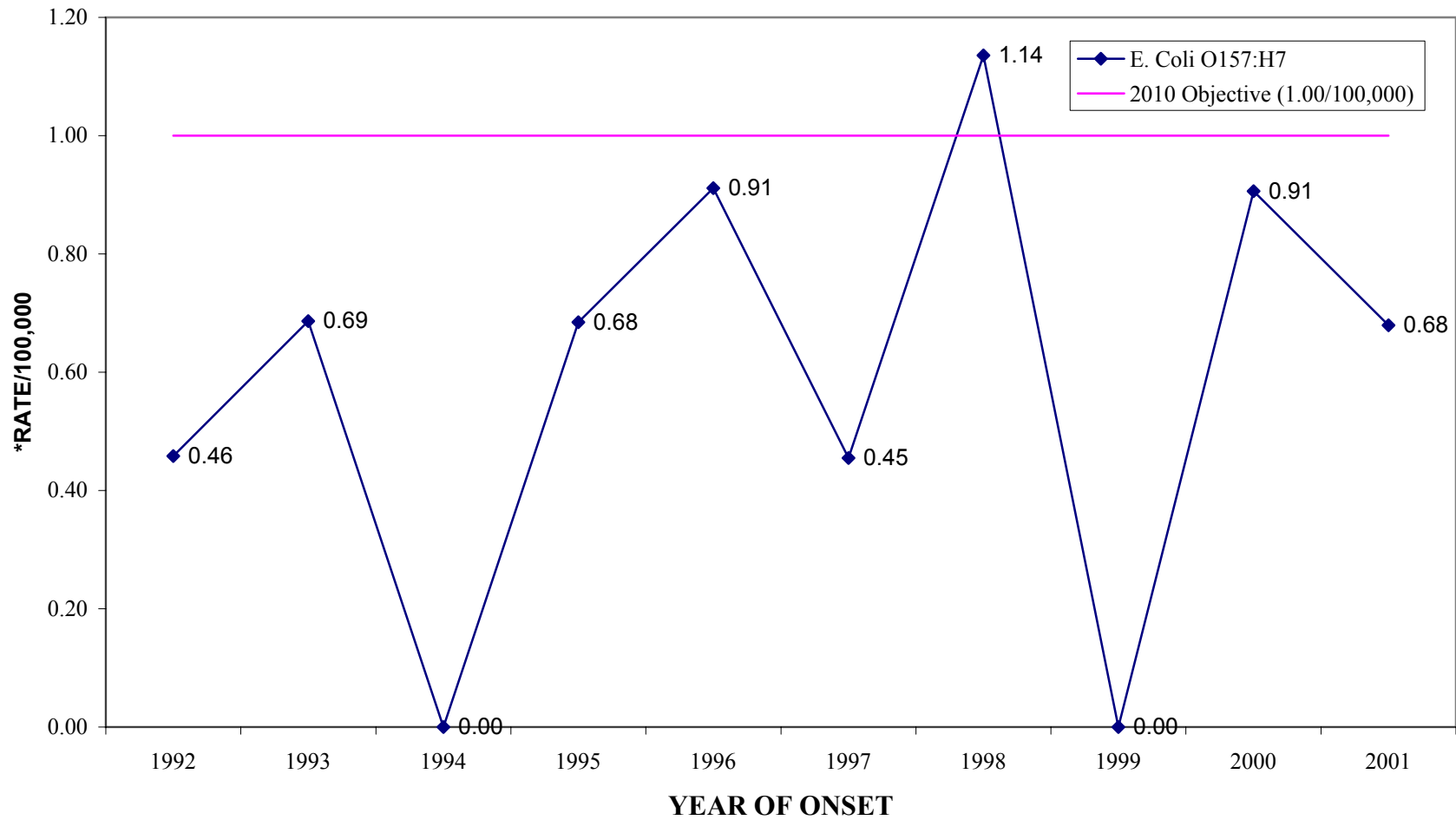
\*BASED ON KANSAS CITY 2000 CENSUS POPULATION DATA

**SALMONELLA RATES OF INFECTION  
KANSAS CITY RESIDENTS  
1992-2001**



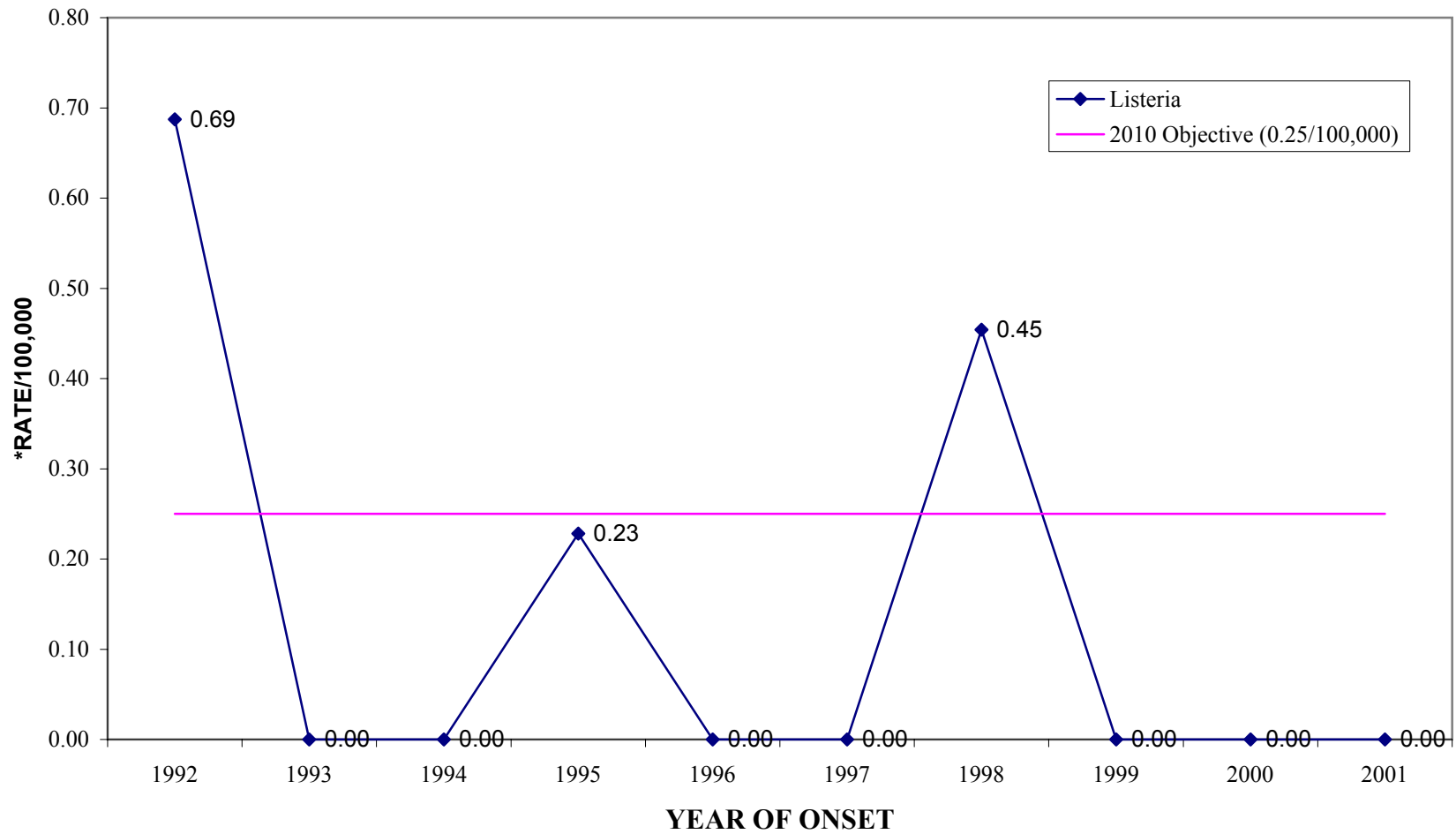
\*BASED ON KANSAS CITY 2000 CENSUS POPULATION DATA

**ESCHERICHIA COLI O157:H7 RATES OF INFECTION  
KANSAS CITY RESIDENTS  
1992-2001**



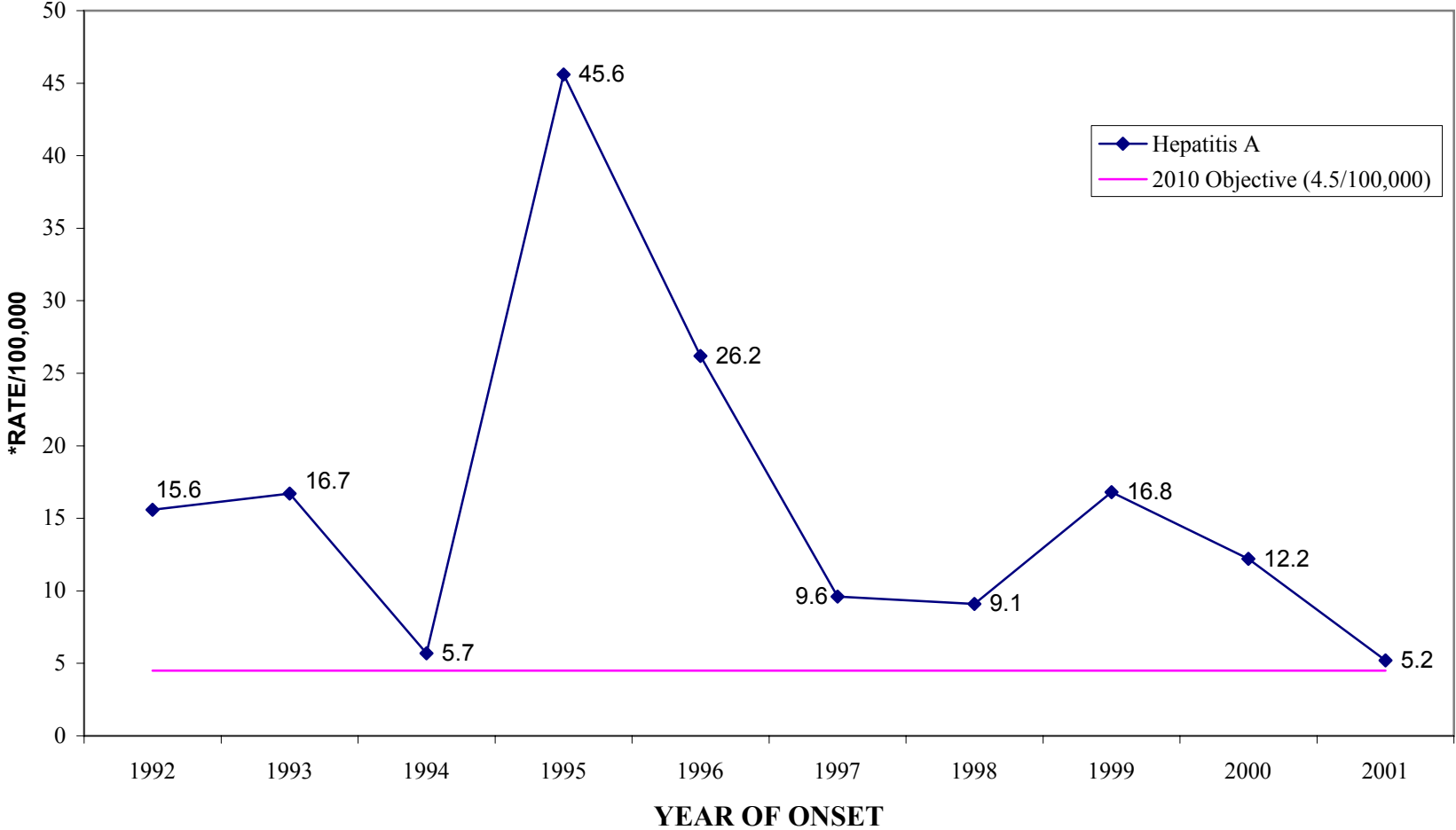
\*BASED ON KANSAS CITY 2000 CENSUS POPULATION DATA

**LISTERIA RATES OF INFECTION  
KANSAS CITY RESIDENTS  
1992-2001**



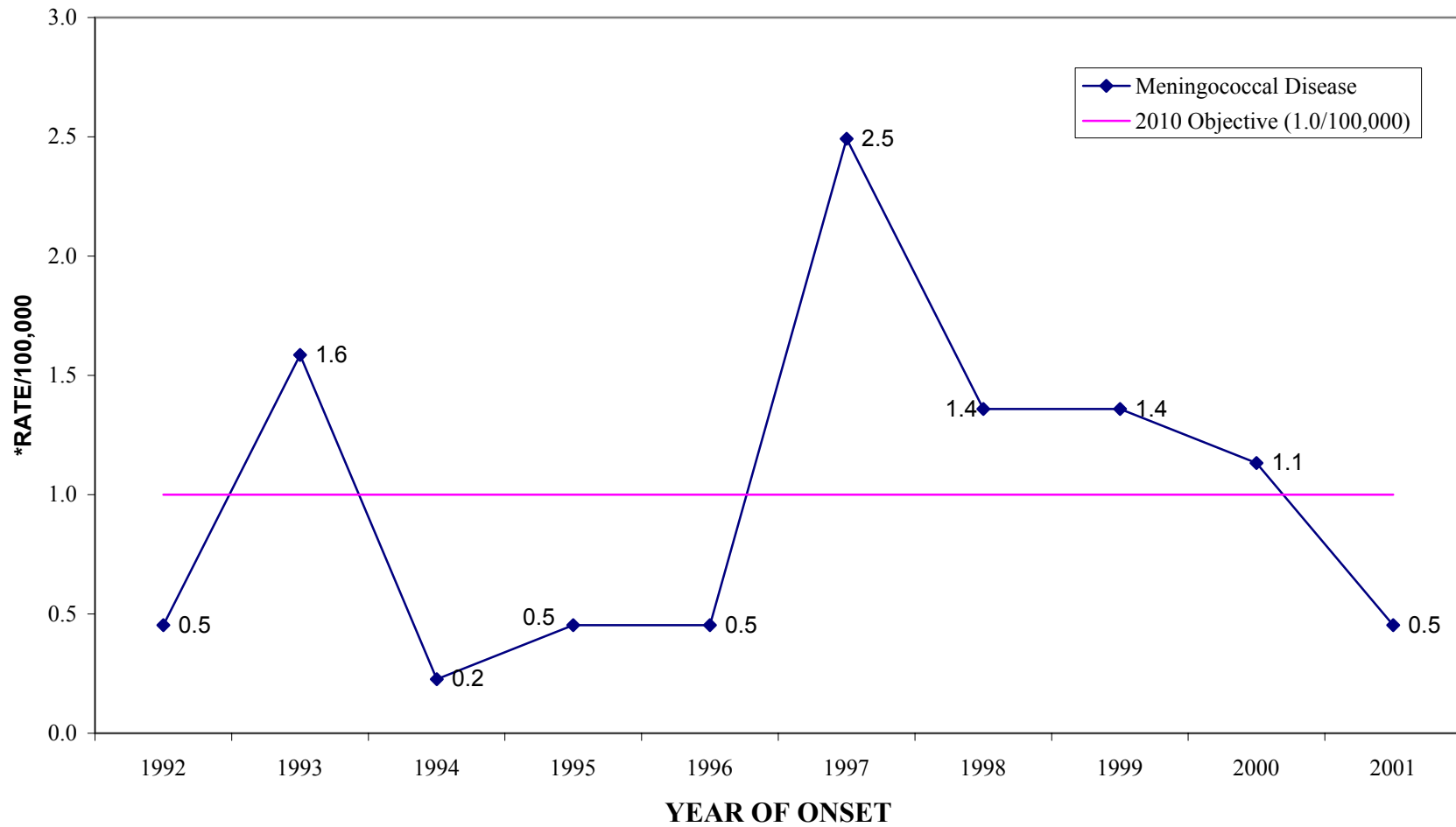
\*BASED ON KANSAS CITY 2000 CENSUS POPULATION DATA

**HEPATITIS A RATES OF INFECTION  
KANSAS CITY RESIDENTS  
1992-2001**



\*BASED ON KANSAS CITY 2000 CENSUS POPULATION DATA

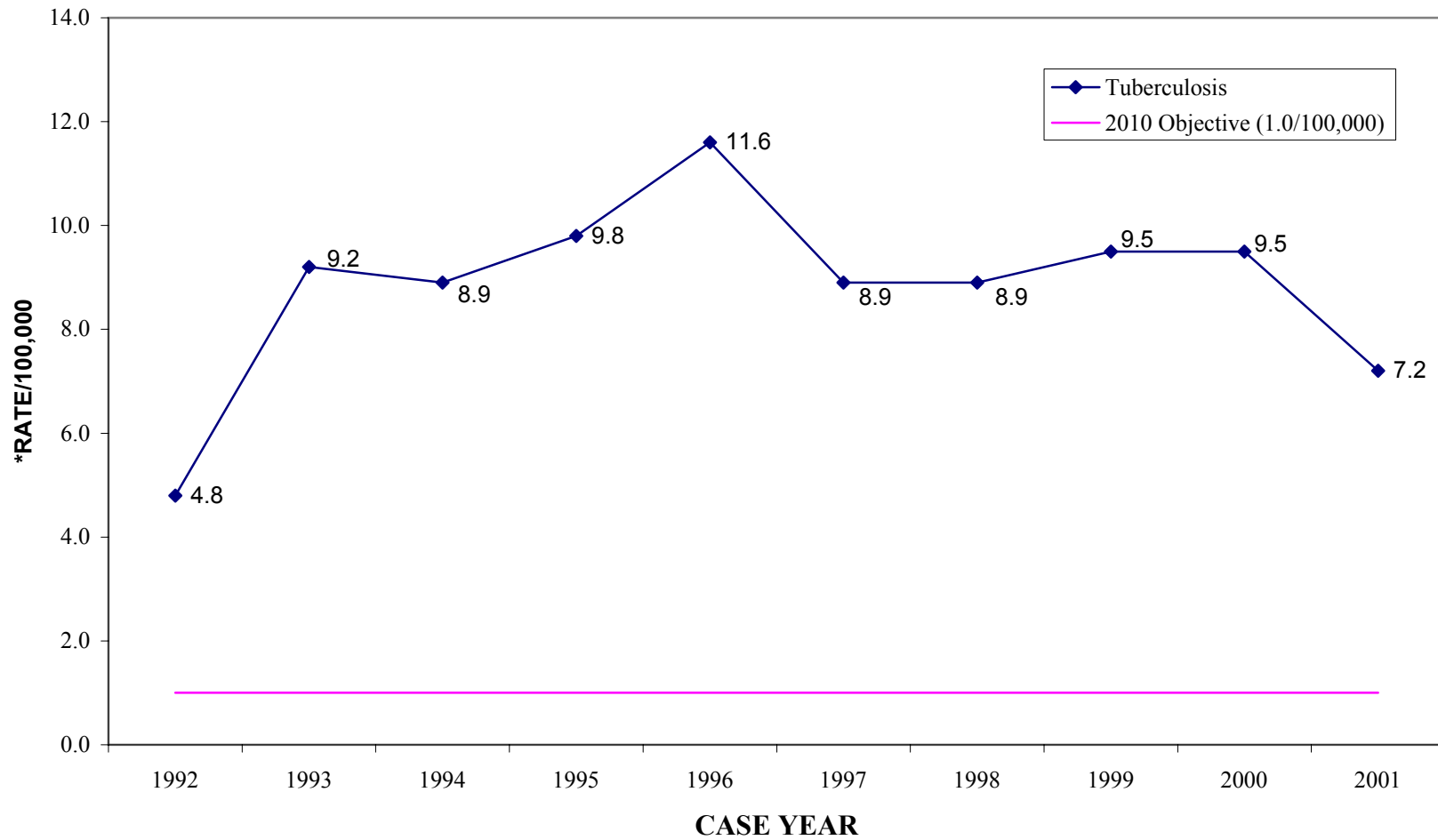
# MENINGOCOCCAL DISEASE INFECTION RATES KANSAS CITY RESIDENTS 1992-2001



\*BASED ON KANSAS CITY 2000 CENSUS POPULATION

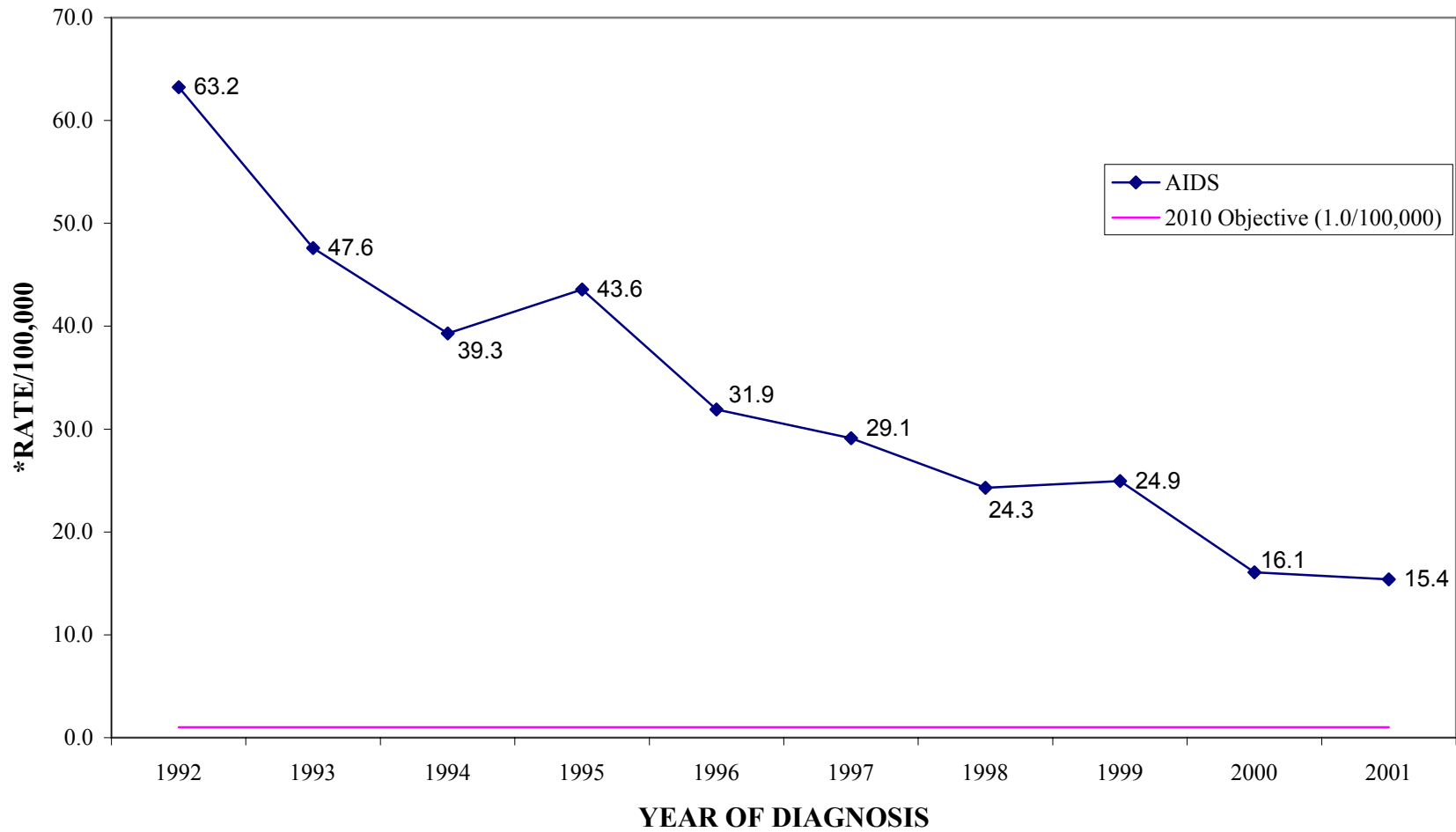
2001 Annual Report

**TUBERCULOSIS CASE RATES  
KANSAS CITY RESIDENTS  
1992-2001**



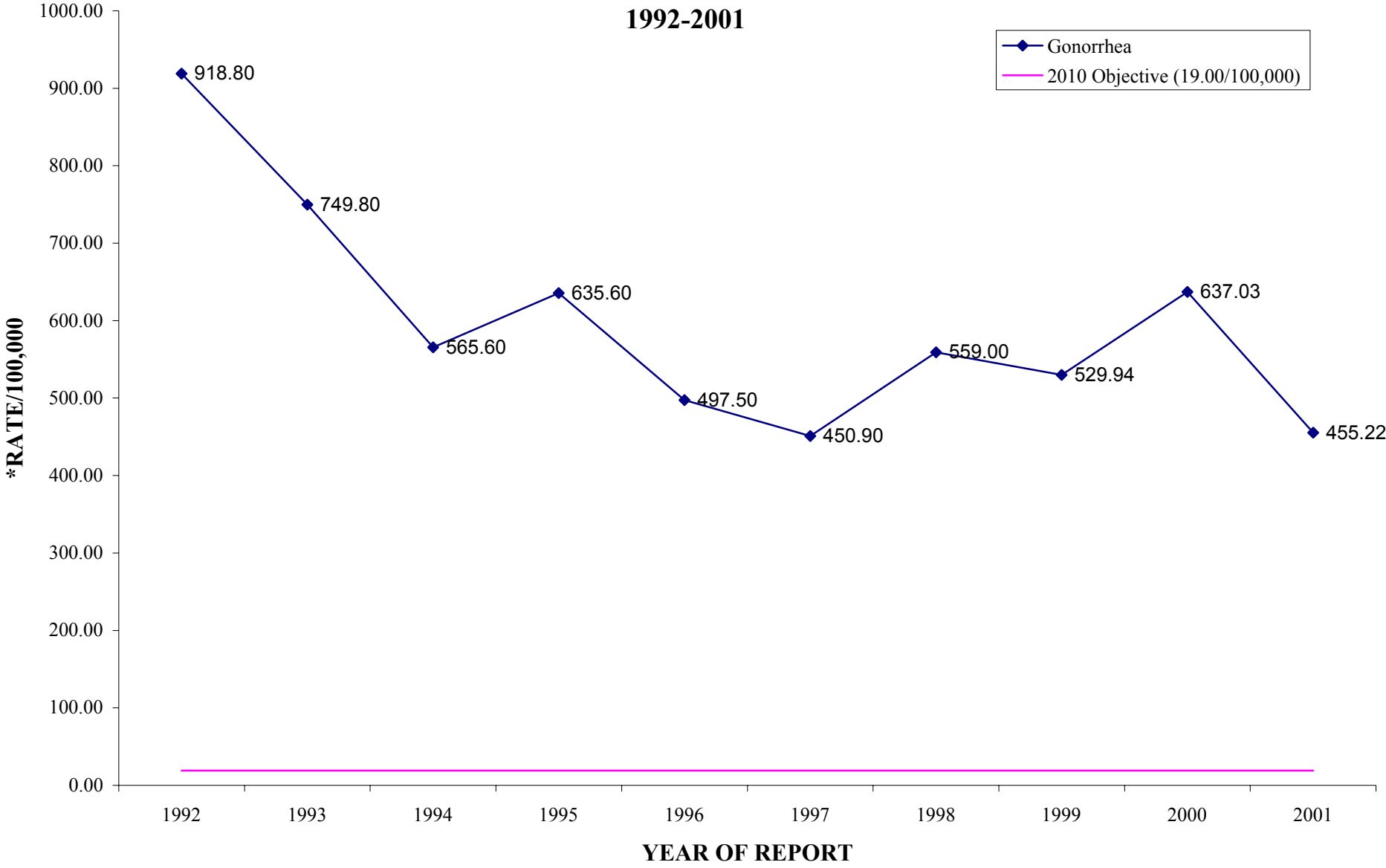
\*BASED ON KANSAS CITY 2000 CENSUS POPULATION DATA

# AIDS CASE RATES KANSAS CITY RESIDENTS 1992-2001



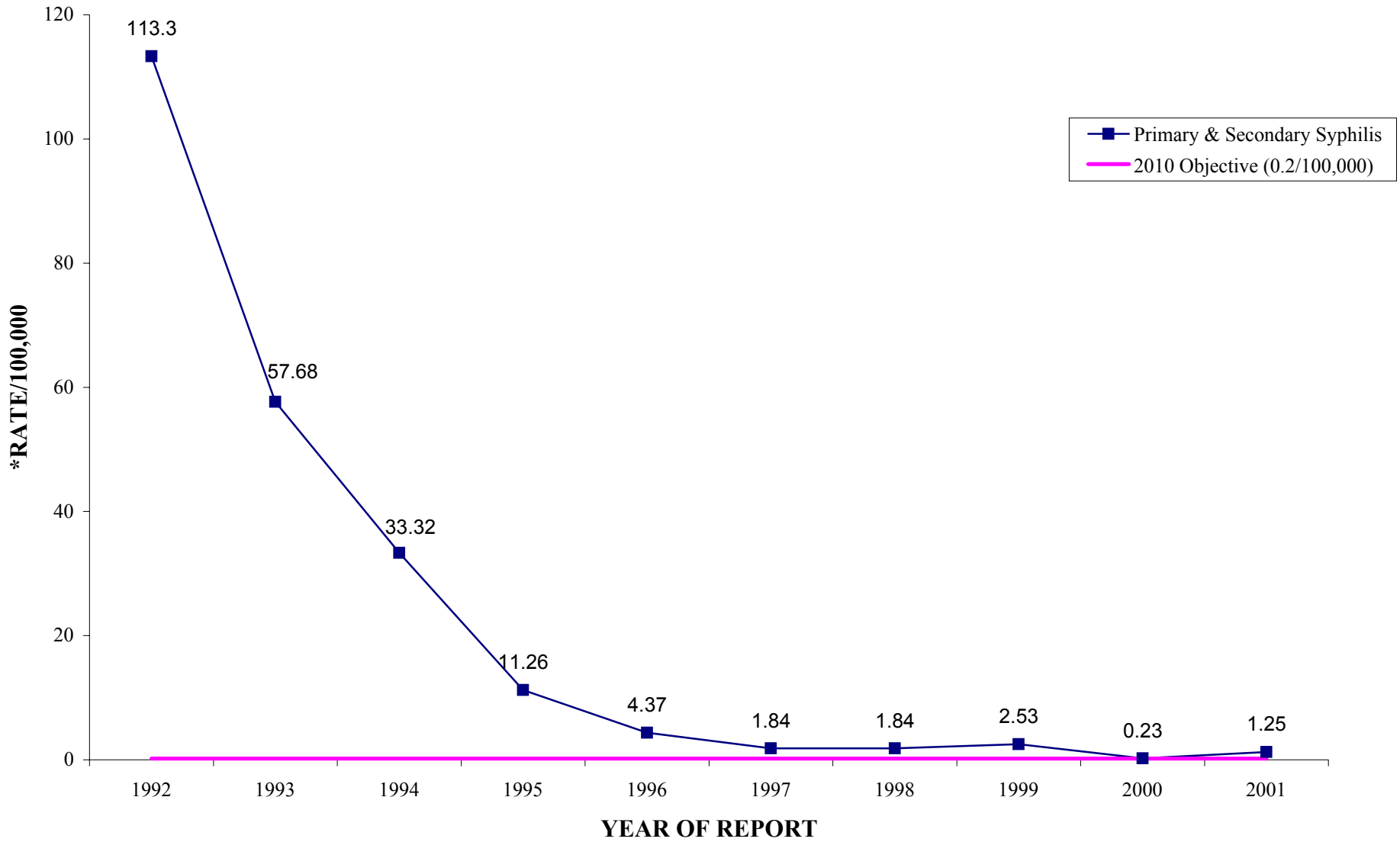
\*BASED ON KANSAS CITY CENSUS POPULATION DATA

**GONORRHEA RATES OF INFECTION  
KANSAS CITY AREA RESIDENTS  
1992-2001**



\*BASED ON KANSAS CITY 2000 CENSUS POPULATION DATA

**PRIMARY & SECONDARY SYPHILIS RATES  
KANSAS CITY AREA RESIDENTS  
1992-2001**



\*BASED ON KANSAS CITY 2000 CENSUS POPULATION DATA

